

MONTHLY MEMBERSHIP PROGRESS REPORT

District 27 E2

Results as of: 3/31/2026

GMT:

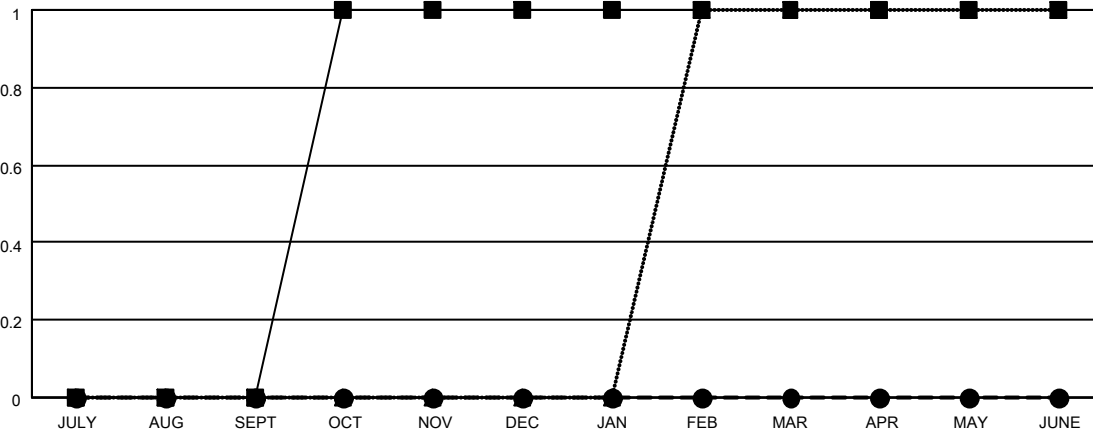
LOCATION WISCONSIN

GMT CA

| Clubs | | | |
|-----------------------|---------------|-----------|---------------|
| RESULTS FOR 2025-2026 | | | |
| QUARTER | NEW CLUB GOAL | NEW CLUBS | DROPPED CLUBS |
| JULY/AUG/SEPT | 0 | 0 | 0 |
| OCT/NOV/DEC | 1 | 0 | 0 |
| JAN/FEB/MAR | 0 | 0 | 0 |
| APR/MAY/JUNE | 0 | 0 | 0 |

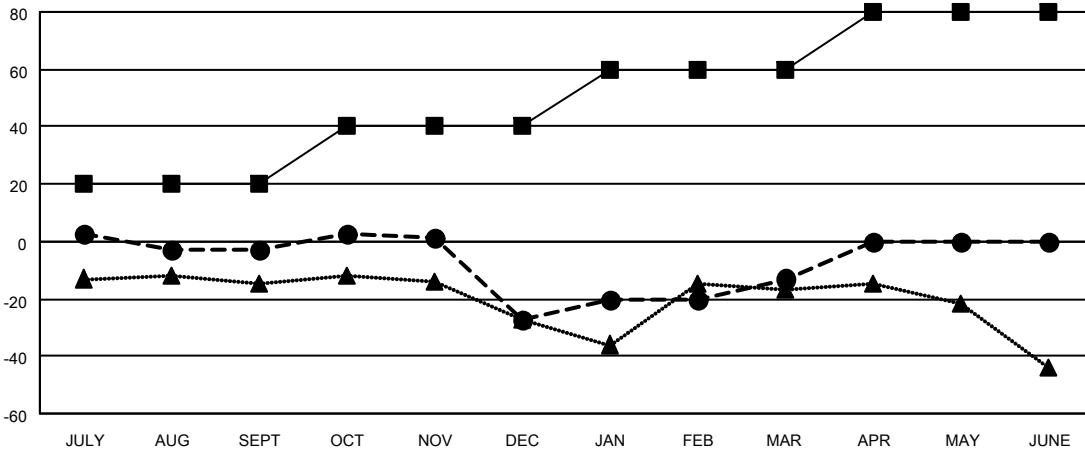
| Members | | | |
|-----------------------|------------------------|----------------------|--|
| RESULTS FOR 2025-2026 | | | |
| QUARTER | MEMBER GROWTH NET GOAL | MEMBER GROWTH ACTUAL | DROPPED MEMBERS ACTUAL (including transfers) |
| JULY/AUG/SEPT | 20 | 30 | 33 |
| OCT/NOV/DEC | 20 | 21 | 42 |
| JAN/FEB/MAR | 20 | 34 | 20 |
| APR/MAY/JUNE | 20 | 0 | 0 |

GOALS AND ACTUAL NEW CLUBS CUMULATIVE



- - CURRENT YEAR GOALS FOR NEW CLUBS
- - CURRENT YEAR ACTUAL NEW CLUBS
- ▲ - LAST YEAR ACTUAL NEW CLUBS

GOALS AND ACTUAL MEMBERS CUMULATIVE



- - MEMBER GROWTH NET GOAL
- - MEMBER GROWTH ACTUAL
- ▲ - LAST YEAR MEMBERSHIP ACTUAL

| | | |
|------------------------|---|-------------------------------------|
| DROPPED CLUBS: 0 | 21 CLUBS OF 43 ADDED 1 OR MORE NEW MEMBERS | GENDER DISTRIBUTION |
| | | MALE 1,119 (71.96%) |
| | | FEMALE 434 (27.91%) |
| DROPPED MEMBERS | CLICK HERE FOR CUMULATIVE MEMBERSHIP DATA | TOTAL FAMILY UNIT MEMBERS 289 |
| DECEASED 8 | | FAMILY MEMBERS PAYING HALF DUES 146 |
| CLUB CANCELLED 0 | | |
| OTHER 87 | | |
| TOTAL 95 | | |